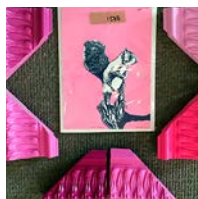


FIZZ UNCORKED

Keeping you in the picture

Fizz
GALLERY & FRAMING

ISSUE
3

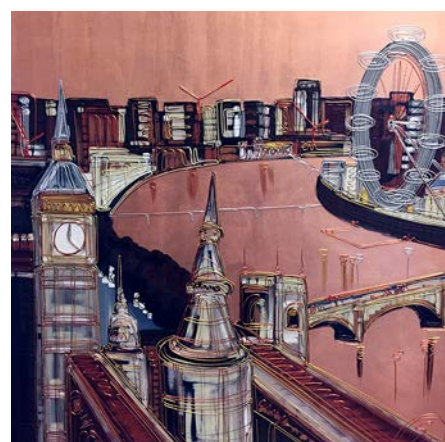


Spotlight

PIER INSPIRES
CLEVEDON DESIGNER

See page 3 >>

Edward Waite TO UNVEIL NEW TECHNIQUE AT FIZZ



From the bright lights of New York to the Clifton Suspension Bridge Edward Waite's contemporary cityscapes have been hot property for some time and it doesn't look like this is about to change any time soon. Tipped as "fast becoming one of the most renowned artists of his generation", Edward is no stranger to success with sell-out shows already under his belt.

Brought up in Sheffield and not yet 30 this is an artist whose good looks, charm and genuinely humble personality have won him many admirers and rightly so. When he isn't pounding the streets with his sketch book or squeezing paint out of tomato sauce bottles (yes, that's his trademark technique) you'll find him giving his free time to schools and inspiring the next generation of students by sharing his experience and techniques.

We've had the privilege of working with Edward for a good few years and we see him constantly evolving his work like a true professional artist would. That's not to say it gets better as time goes on – it just develops subtly so that those who purchase his work have always got something new to see and no one could ever feel he is "churning it out". Prolific yes, one trick pony definitely not.

THE NEXT GENERATION OF EDWARD WAITE ORIGINALS

In November of this year Edward is introducing a brand new material into this work and we are so excited to have been chosen as the gallery that will launch this much anticipated new collection 'City to City'. It is very much under wraps at the moment so we can't say too much – but knowing Edward he won't disappoint. This is his biggest show of 2017 and as usual there will be plenty of choice, from local scenes to iconic cities and buildings world-wide, across a range of prices and sizes.

To be the first to see these fantastic new paintings and spend time chatting with Edward – be sure to attend the VIP Preview on **Friday 17th November**: email sandy@fizzgallery.co.uk for an invitation. To see him **painting live** come in to the gallery on **Saturday 18th November**.



Inside...

Impressions in Silver

Read what inspires jewellery maker Gabbie Gardner's distinctive designs

Think you know Sandy?

Think again... as she gets the 'meet the team' treatment

New Season Arrivals

Check out some of the great new arrivals landing in the gallery

Meet the FIZZ Team : **Sandy**



What's your most memorable thing from the last 12 years of Fizz?

"Oh that's a hard one – there are many memorable moments, some good and some not so! On the not so good – being flooded in 2007 wasn't a great moment and keeping the gallery open when Fenella was having chemo through 2012/13 was really difficult. On a happier note our opening weekend in 2005 was amazing and the

support we've had ever since has really touched me. That's what I love about being in a small town, we really get to know customers and sharing their emotional connections to the pieces they purchase is really special – and has us running for the tissues!

What would Fenella say is your most annoying habit?

That's easy. Fenella is in charge of all the displays in the gallery. I have a habit of walking in and saying "is that staying there" when she's only half way through a new display. I need to learn to wait until she's finished before I give an opinion!!

Are you from Clevedon?

Very much so – I was born and grew up in West End, Nailsea. My Mum and her parents are from Nailsea and my Dad's family are Bristolian. I lived in Bristol for 20 years in my earlier career but am firmly settled in Clevedon now. We are so

lucky to live and work in such a beautiful place.

What's the biggest challenge for you running a small business?

With so much to do on a day-to-day basis it's easy to get bogged down and lose sight of the bigger picture. Every day I am a marketer, a sales person, a finance department, a buyer, the tea maker and more. The amount of work involved is huge. Finding time to step away and develop the longer term vision is hard particularly when your business culture is based on "customers first".

Who has been your biggest influence in business?

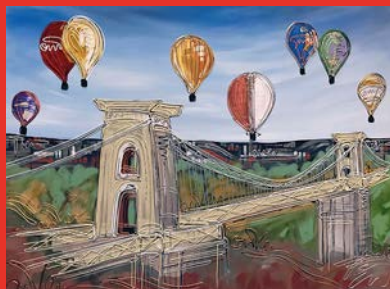
No one person really although Steve Jobs created a service culture in Apple that I have often referred to as our benchmark. Giving customers a positive and rewarding experience is really important to me."

What's on...

EDWARD WAITE EXCLUSIVE to FIZZ

17th & 18th November

Join us as we host the launch of Edward's latest collection City to City. We are delighted to have been selected by Edward to showcase his new technique. With a VIP Preview on the evening of 17th and live painting on 18th it promises to be a great weekend.



To attend the VIP Preview evening contact the gallery on 01275 341 141 or sandy@fizzgallery.co.uk to request your invitation.

CHRISTMAS PREVIEW EVENING

Gift Inspiration from FIZZ

30th November 5-8pm

Join us for our annual Christmas event. Relax with a glass of FIZZ whilst you discover a gallery full of new and inspiring gift ideas.

Feel free to bring family and friends – everyone welcome.

HILL ROAD ST NICHOLAS FAYRE

7th December

If you are heading to the Christmas Fayre on 7th December then pop in for some additional gift inspiration. We will be taking part and open until 8pm.

THANK YOU Jean Picton

A big thank you to everyone who came to our Jean Picton show in September and congratulations to all who made a purchase.

Jean fascinated us all with stories from her colourful and vibrant celebrity life and we were all amazed by her energy at 83 years old! We have a permanent range of Jean's work available in the gallery and online if you missed the show.

www.fizzgallery.co.uk/browse-by-artist/96/jean-picton



We Love... A scented home



Quirky sentiments accompany the beautiful fragrances of these 100% natural soy wax candles & reed diffusers. Perfect for a gift or treat yourself.

In our opinion the best quality scented range we have tested.

£20 (gift packaged).

Spotlight



Gabbie Gardner



Soldering the finishing touches



Pier Inspiration by Gabbie Gardner

The intricate designs of the Pier metal work reflected in Gabbie's jewellery

Clevedon based silversmith Gabbie Gardner explains the inspiration behind her hand-made silver jewellery as well as the process she uses for creating these beautiful, individual pieces.

Having lived in Clevedon since 1998 I am lucky enough to be surrounded by beautiful landscapes, water, plants, creatures and what feels like a million other inspirational elements; all of which are a rich source of ideas for my jewellery designs.

My "Impressions" collection grew from a desire to use Clevedon Pier as an inspiration, but in a less strictly representational way than is often seen. The history and construction of the Pier is fascinating, an excellent example of Victorian design, much loved by locals and visitors alike. My aim was to create a range of jewellery which would give the wearer their own little piece of the pier!

Handcrafted using traditional techniques

Without exception my Impressions collection is made by me, by hand – often involving many hours of concentrated effort and continuing a long tradition of silversmithing skills.

"In a world dominated by mass production, the invisible thread which connects maker and wearer, via design, craft processes and materials is an element of my work that is very important to me."

The jewellery begins with a flat sheet of silver which is measured and marked into the desired shapes for the jewellery using a sharp scribing tool. Using the same tool, I then draw

the designs onto the silver. Earrings often have opposite halves of a pattern to make a pair without both being identical.

The designs are then painted with an acid resist solution and dried, before immersing into a nitric acid mix for between ten and thirty minutes. The acid will eat away the unpainted silver, while the painted patterns will be left in relief. After the acid and resist are cleaned away, the marked out shapes are sawn, filed and smoothed; each shape is curved into a more 3D form using hammers and rounded blocks.

Soldering on rings and fittings is next and then a lengthy polishing process to highlight the raised patterns leaving the lower etched areas with a more matt finish to give maximum contrast.

The final addition of ear wires and chains completes the items ready for wearing. The process means that every piece of jewellery will be different even when patterns or shapes are repeated. I have also made variations with added gold accents or small pearl droplets.

Gabbie's Pier inspired "Impressions" collection is exclusive to Fizz Gallery. It's timeless, classic elegance has made this collection one of our longest held ranges.

Ask The Expert

Q. What's the most unusual or difficult thing you've been asked to frame?

A. That's a great question. I'd say one of the most difficult was a set of 24 antique silver dessert spoons. The customer wanted to use 12 of them to create the effect of a clock with the other 12 placed head to toe in a square around the outside. We knew the customer well and he trusted us to make the design decisions – which is flattering but certainly adds pressure! The end result was fantastic and the customer was delighted.

Other items worthy of a mention are a stunning Grayson Perry tapestry (just wow!), a pair of Darcy Bussell's signed ballet shoes and a 1950's Morgan hubcap. Recently we framed a set of WW2 medals alongside a love letter that was never sent – definitely a "tissues moment" – and last year we were asked to frame an Anna Marrow silk screen in a traditional gold ornate frame but then make up a Neon Pink lacquer paint finish for the frame. It was good fun and it looked really cool.

Whilst we love anything different and outrageous sometimes the greatest pleasure comes from seeing a simple photograph or print being completely transformed into something special, just by getting the framing spot on.



Bespoke frame with eight layers of hand mixed lacquer to create the final effect



Colour samples were created for the customer



Box frame with shoes fixed using conservation methods to prevent damage and allow easy removal if needed.

**No matter what the item,
if you need anything framing
come and have a chat.**

**Our framing team have over 25
years of experience to share.**

Lovely new arrivals at FIZZ

We've been excitedly unpacking some lovely new season arrivals – here's just a few to whet your appetite, pop in to take a closer look.



New to Fizz
– emerging artist **Sarah Holmes**.
Stunning oils on canvas.



Silversmith **Sally Ratcliffe** joins
FIZZ – beautiful one-off pieces



New **Doug Hyde** releases
available now



Serve drinks with style in this
gorgeous **Octopus Bowl**

Relaxed informal atmosphere, browsers [and dogs!] welcome



26 Hill Road / Clevedon / North Somerset / BS21 7PH
T: 01275 341 141
info@fizzgallery.co.uk
Open 10am-5pm Monday-Saturday



FRIENDS OF FIZZ – have you joined yet?

If you'd like to receive this Newsletter directly to your inbox, plus VIP invitations and special offers, why not sign up as a Friend of FIZZ. Joining is easy and we won't share your data with anyone. Just drop us an email, let us know when you are next in the gallery or sign up via the link on our website.